



www.wobit.com.pl

WOBIT SCARA-R2



Advantages:

- Profitable price/quality ratio
- Arm's reach up to 1000 mm
- Possibility of selection preferable drive
- High operational dynamics with servo AC
- Free software for robot configuration and programming

SCARA-R2 robot manufactured by polish company WObit is an attractive product for everyone, who needs an industrial robot with high functionality in a good price. Our industrial robot offers 4 axis of motion and payload up to 5 kg. Simple and compact construction guarantees its reliability. Wide reach up to 1000 mm allows easy adjustment of the robot for your application. Robot is available in two versions. First model is equipped in stepper motors and incremental encoders which ensures positioning repeatability and an optimal operational speed. At second model for two axes we used AC servo drives which vastly improved dynamics of the robot.

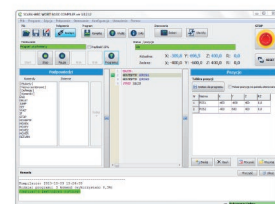
For second robot's arm is delivered pneumatic and electrical connection that enables mounting pneumatic or electric gripper. Electrical connector also allows for connection of three input signals DC 24V for position control of the gripper.

Free software is an important part of the robot. It allows for fast configuration and record of motion trajectory of the robot. Delivered software has and intuitive interface which significantly decreases time of training of robot handling.

SCARA-R2 is primarily used for fast assembly and pick & place applications. Thanks to usage of innovative construction, based on WObit's components along with intuitive controlling system we vastly decreased robot's price in comparison to other SCARA robots. SCARA-R2 is a response to the needs of many small and medium-size businesses who want to modernize assembly and manufacturing processes.

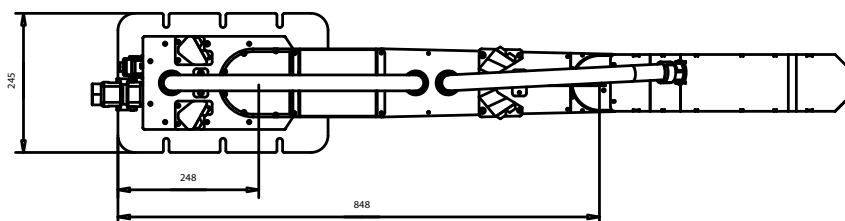
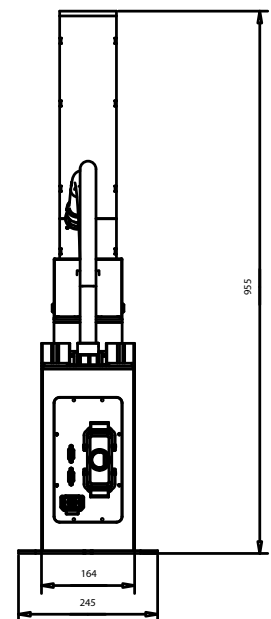
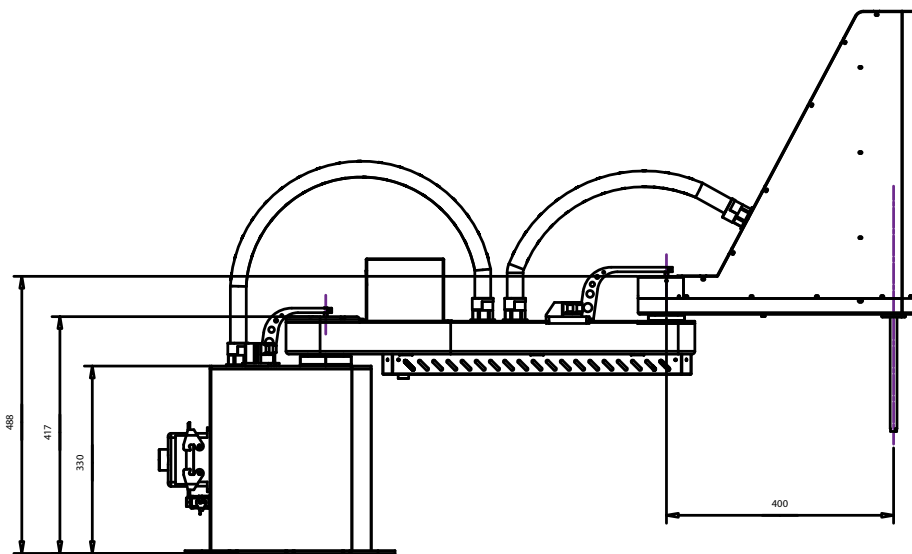
Two models:

- SR1000 - STZB (based on stepper motors)
- SR1000 - SVZB (based on servo drives)



Free software for robot configuration and programming

Technical data	SR1000 – STZB	SR1000 – SVZB
Positioning repeatability of „X,Y”/”Z”/”U” axes	1± mm/ 0,1± mm/ 0,1°	
Rated speed	AXIS1: 144°/s; AXIS2: 144°/s; AXIS3: 1,2m/s; AXIS4: 1000°/s	AXIS1: 234°/s; AXIS2: 234°/s; AXIS3: 1,2m/s; AXIS4: 1000°/s)
Max. arm's reach	1000 mm	
Max. angle of rotation of first arm	± 105°	
Max. angle of rotation of second arm	± 140°	
Max. overhang of end effector („Z” axis)	310 mm	
Angle of rotation of end effector („Z” axis)	360° or its multiplication	
Rated load of „Z” axis	1 kg (max. 5 kg)	
Housing/arms material	Steel/aluminum	
Weigth of the robot	about 60kg	
Drive of „X, Y” axes	Stepper motors with incremental encoders	AC servo drives with incremental encoders
Drive of „Z”, „U” axes	Stepper motor with encoder	
Operating temperature	+10°C up to + 50°C	
Power supply of the gripper	Pneumatic or electric (24V)	
Controlling outputs of the gripper	1x pneumatic valve, 2x electric signal 24V/1A	
Gripper's inputs	3x opt insulated inputs 24V	
Power supply of the robot	230V AC (delivered directly from the feeder)	
Interface	opt insulated RS232, RS485 Modbus	
Digital outputs	8 x open collector PNP 0,5A; 2 x relay	6 x open collector PNP 0,5A; 2 x relay
Digital inputs	12 x opt insulated 24V	8 x opt insulated 24V



P.P.H. WObit E.K.J. Ober s.c.
62-045 Pniewy, Dęborzyce 16
tel. +48 61 22 27 410
fax. +48 61 22 27 439
wobit@wobit.com.pl